

Why Join a Political Party?

By joining a political party you become an active citizen, shaping party policy and supporting its candidates, while able to get involved in the party's democratic structure. Be part of a 25,000 strong organisation that's focused on doing its best to create a better Ireland for all.

LOOKING FOR A PARTY TO JOIN? JOIN FINE GAEL.

Inclusion of all groups is a high priority for Fine Gael, as it affords everyone the opportunity to connect with every part of Irish society. It is the Party that best represents the interests of all communities. Get on board and help create an Irish society that is equal, diverse and rich in opportunity for all citizens. It is the party that delivers on its values.



News

Get the latest updates and news from inside the Party.



Take Part

Join our intimate Front Row events for discussions with An Taoiseach and Ministers.



Ard Fheis

Join and attend the Ard Fheis and National Conference.



Voting

Protect your voting rights for AGMs, candidate selection conventions, elections of key leadership positions etc. Members who don't affiliate on time or who aren't affiliated for 2 years consecutively lose this valuable franchise.



Branch

Help your branch meet the minimum number for affiliation.



Influence Party Policy

Join Fine Gael's Policy Lab, where you can contribute to developing important new policies.



Election Campaigns

Help with fundraising for the Party's election campaigns (all membership and Superdraw income is ring fenced for this purpose only).

To join Fine Gael go to www.finegael.com and click on membership. You can join on-line or you can print off a paper application form. Standard rate for membership is €20, €15 for over 66 and full-time student. To learn more about Fine Gael and our member's networks contact membership@finegael.com

DID YOU KNOW YOU CAN VOTE

in the Irish Local Elections:

If you are resident in Ireland and have a PPS number. Even if you are not an Irish citizen. Yes you can VOTE.

So you should **VOTE** to have your say in your community and help create an Irish society that is equal, diverse and rich in opportunity for all citizens.

By exercising your right to vote in the next Local Elections, you will be playing your part in shaping your future and the future of others in your community.

- You should **VOTE** to elect candidates who can represent you and push for your issues to be addressed.
- You should **VOTE** to have a say in improving facilities provided in your community.
- You should **VOTE** to make sure the voices of your community are represented.
- You should **VOTE** to influence business support for your community.



Local Authority Details

Meath County Council, Buvinda House, Dublin Road Navan, Co. Meath, C15 Y291

+353 (046) 9097000

customerservice@meathcoco.ie

Your Local Fine Gael Team

Damien English TD

046 907 1667 damien.english@oir.ie

Colm Markey MEP

+32 228 37214 colm.markey@europarl.europa.eu

Maria Walsh MEP

087 721 5415 maria.walsh@europarl.europa.eu

FINE GAEL

FINE GAEL

YOU *can* VOTE



IT'S YOUR RIGHT

Use It

Cllr. Yemi ADENUGA

Peace Commissioner

087 762 1660

yemi.adenuga@members.meathcoco.ie

Councillor Yemi Adenuga

@SharingWithYemi

www.yemiadenuga.com



New to the area?

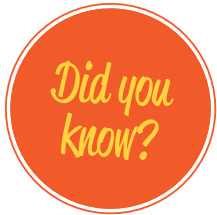
New to Ireland?

Just turning 18?

Make sure you are registered to vote

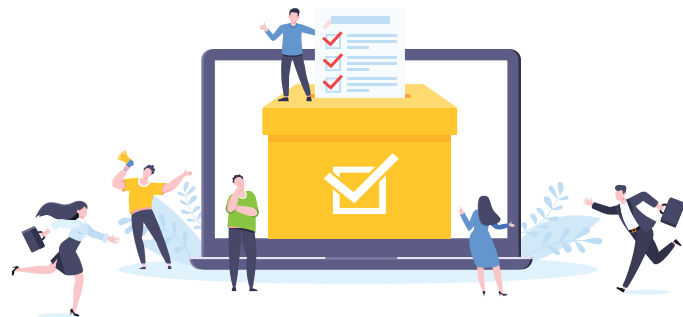
Don't Miss Out on Your Chance to Vote!

New to the area? New to Ireland? Just turning 18? Make sure you are registered to vote. If you have registered already, the process has changed and further details are required.



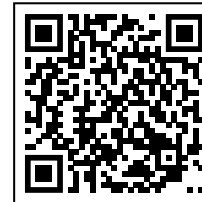
- Anyone over 18 and resident in Ireland can vote in the Local Elections.
- Irish Citizens and British Citizens living in Ireland can vote in General Elections.
- Irish Citizens and Citizens of the EU who live in Ireland can vote in European Elections.
- The electoral registration process has changed and it is now easier to register to vote and to update your details. Even if you are already registered, you now need to add your PPSN, date of birth and Eircode.
- Anyone resident in Ireland can join Fine Gael

Even if you are registered, everyone is being asked to check and complete their details by adding their PPSN, date of birth and Eircode. Visit www.checktheregister.ie for more information.



Local Elections

Every resident, in Ireland, aged 18 and over regardless of their nationality can vote in Local Elections, usually held every 5 years in May. The next local election will be held in May 2024.



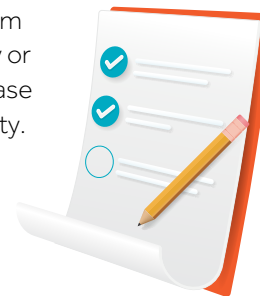
You can check to see if you are registered to vote with your local authority or visit: www.checktheregister.ie.

If you wish to be included on the Electoral Register and register to vote you can submit a paper application form or apply online at the following website:

www.checktheregister.ie

See QR code above to the application form.

Alternatively, you can pick up the form from your local Garda station, library or council office. Once completed, please return the form to your local authority. On the envelope, write **'Electoral Register'** and the address of your local authority. You may post using a standard stamp. See local authority details on final page.



ELECTIONS YOU MAY VOTE IN based on your status				
ELECTIONS	Irish Resident Non-Irish Citizen Non-EU Citizen	Irish Resident Irish Citizen	EU Resident Irish Citizen	Irish Resident British Citizen
Local Elections	YES	YES	YES	YES
Seanad Elections	NO	NO	NO	NO
Dáil (General) Elections	NO	YES	NO	YES
European Elections	NO	YES	YES	NO
Referendum	NO	YES	NO	NO
Presidential Elections	NO	YES	NO	NO

You can Join a Fine Gael Network

Fine Gael Intercultural (FGI) Network

Fine Gael Intercultural (FGI) Network promotes the voices and perspectives of the new communities and those from a migrant background, supporting and enabling them to participate at all levels in the party, and inspire migrants to influence party policy on migrant affairs, take leadership roles within Party structures, and come forward as Fine Gael candidates for elections.

Fine Gael Women's Network

Fine Gael Women's Network advances gender equality, the election of more women to public office, and to engage Fine Gael women to participate actively and fully in the Party, now and into the future. It is committed to creating an inclusive space to inform, empower and support women into leadership roles both across our Party and in elected politics.

Fine Gael LGBTQ+ Network

Fine Gael LGBTQ+ Network exists to promote the voices and perspectives of members of the LGBTQ+ community and to support their participation at all levels of our Party. It is a network of members, committed to ensuring transformative and inclusive policies that affect the LGBTQ+ community in Ireland.

If you are interested in learning more about these networks becoming a member is your first step.